

BenchDot

Marking Windows
 100mm x 100mm
 150mm x 150mm
 300mm x 150mm

Market leading, precision bench-top Dot Peen marking machines.

Standard 4000 embedded controller provides full range of marking and control features. Powerful PC-based software package enables customised operator interface, password control, integrated vision systems, component traceability, and networking.

Optional large marking areas, automatic sensing and adjustment of marking gap ensures fully repeatable mark depth, quality, and size. Verification cameras can be integrated to check against marking standards.



STANDARD FEATURES

- 4000 Embedded Controller
- I/O card for 8 inputs, 6 outputs
- Electromagnetic solenoid-driven Dot Peen marking
- 100mm x 100mm marking area
- Flat, machined base for fixture mounting
- 90° stylus, 100mm long, 4mm diameter, carbide tip
- Emergency stop built into controller

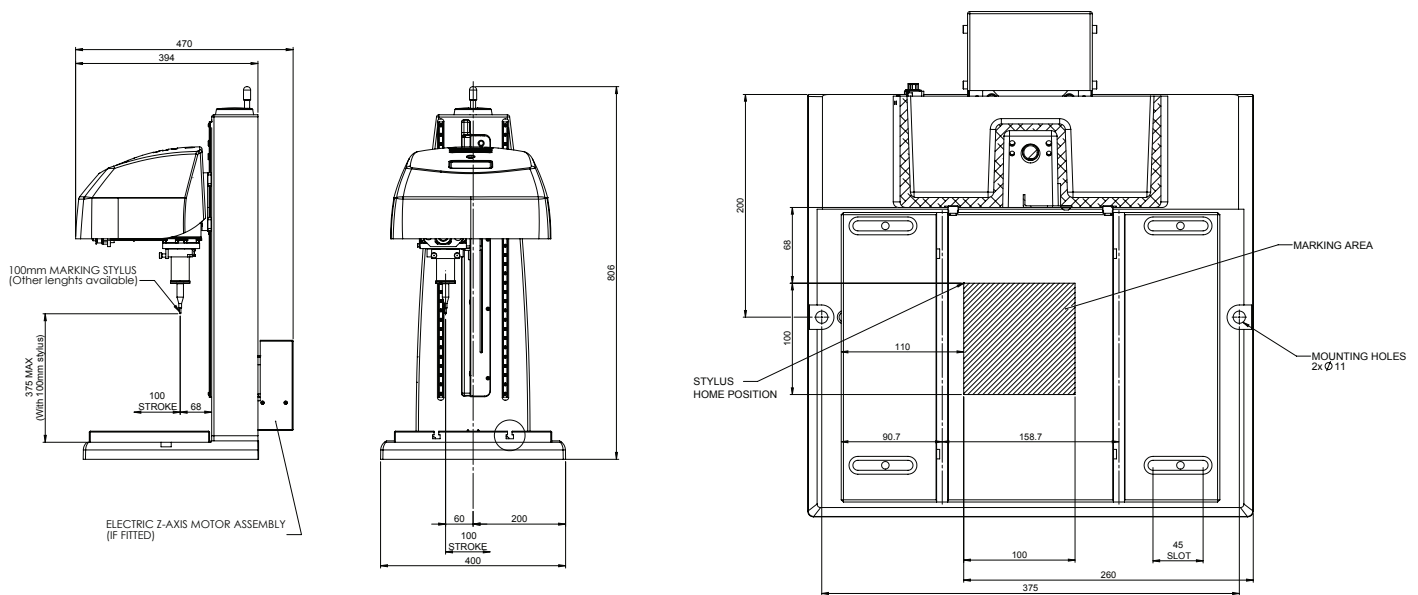
APPLICATIONS

- Aerospace, including specific marking and verification standards
- Rail
- High precision marking requirements
- Larger, flat components

OPTIONS

Powered Z-axis, Autosense	Programmable height for precise, repeatable marking force
150 x 150mm marking area	
300 x 150mm marking area	
PC-based software control	Drag-and-drop editor, user admin rights, connectivity
Column extension	Increases column height and maximum component height by 110mm
Alternate nosepiece / stylus	Wider / shallower tip angle, IAQG spec, longer

TECHNICAL DATA		<ul style="list-style-type: none"> ● Standard ○ Optional
Marking area	100mm x 100mm; 375mm max component height 150mm x 150mm; 375mm max component height 300mm x 150mm; 365mm max component height	<ul style="list-style-type: none"> ● ○ ○
Dimensions	W: 400mm, H: 806mm, D: 379mm With digital z-axis W: 400mm, H: 806mm, D: 448mm Note: 300x150 head cover is larger than base: W: 515mm	<ul style="list-style-type: none"> ● ○ ○
Weight	>40kg, depending on size and options	<ul style="list-style-type: none"> ●
Nosepiece & stylus	100mm long, 1/8 inch diameter, 90° stylus tip, carbide Various alternatives available	<ul style="list-style-type: none"> ● ○
Construction	Cast aluminium column and base, metal internals and plastic cover As above As above, metal cover	<ul style="list-style-type: none"> ● ○ ○
Operating temperature	0°C - 80°C (32°F - 176°F)	<ul style="list-style-type: none"> ●
Supply requirements	240V 50Hz / 100v 60Hz	<ul style="list-style-type: none"> ●
Workpiece hardness	Max. 62 HRC (800HV)	<ul style="list-style-type: none"> ●
Marking type	5 x 7, 7 x 9, Varidot, logos,	<ul style="list-style-type: none"> ●
Character sizes	0.15mm - 99.9mm in 0.15mm increments	<ul style="list-style-type: none"> ●



ACCESSORIES

Description

T-slotted base - extruded	For attaching fixtures to the base; extruded aluminium 45mm pitch
T-slotted base - machined	Solid, machined base with 2 slots, 158.7mm pitch
Single label fixture	For right angled labels/parts 35-100mm x 20-75mm x 0.5-2.0mm
Magnetic clamp	For flat parts. Area 184mm x 100mm. Holding force 80N/cm ²
Magnetic V shaped clamp	Cylindrical parts diameters 5-70mm, includes machine base adaptor
Circumferential axis	Marking round circumference, part diameter up to 76mm
Electric label feed	For flat, burr free labels 25-110mm x 25-75mm x 0.8-3.0mm thick
Circumferential axis	Marking round circumference, part diameter up to 76mm
Barcode Reader	RS232 barcode scanner to select programme or input marking data
Data Matrix Reader	RS232 Data Matrix scanner to select programme or input data