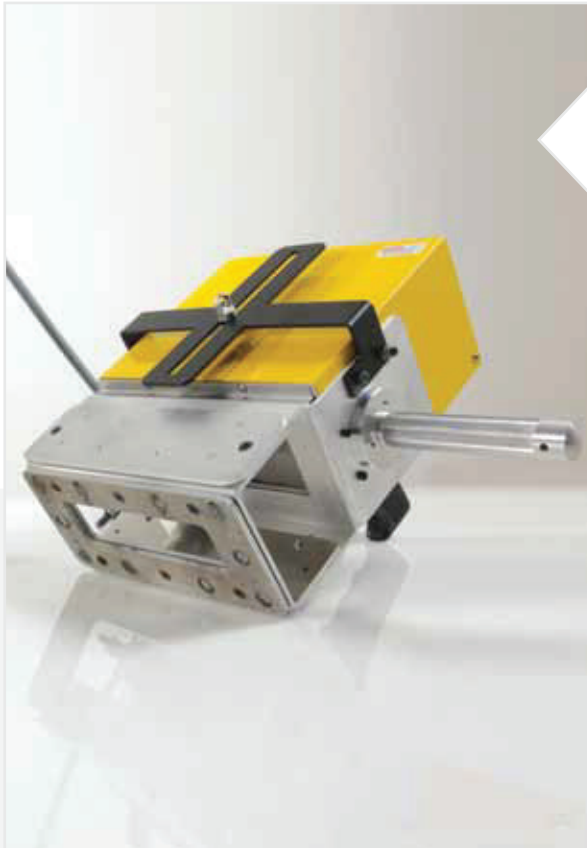


X SERIES | MODEL X50

## HIGH PERFORMANCE PORTABLE MARKING DEVICE

**Software:**

Programmable from the remote touch-screen panel and from the new "stamper 2.0" PC software.

**Weight:**

Total weight of the head: Approximately 7.5 Kg

**Features:**

For the marking of metals to be subjected to surface treatments such as varnishing, sandblasting, galvanisation... Designed for specific applications, such as marking of frames, tanks, pipes, heavy structures... Maximum flexibility of use: different working modes for high definition, high-speed or high depth markings. Works on all types of metals including hard metals. Suitable for marking flat and curved surfaces, even without rotation of the part.

**Marking:**

Marking of variable texts, serial numbers, date and time, logos and drawings (DXF and PLT).

20 Native fonts, Anti-stress fonts and all True-Type fonts available.

The size, style and direction of the text can be programmed.

Marking with DATA MATRIX codes according to NASA specifications.

**Connections:**

Ethernet - USB - RS-232/485 serial - Digital I/O opto-isolated 24VDC.

**Memory:**

Internal memory: 4GB Micro-SD.

**Power supply:**

Pneumatic 6 bar max. (20N/L min.) power supply.

90 to 264 VAC (50 / 60Hz) 40W power supply.

**Punches available:****6 mm (25 mm bore)**

- Standard **KIT-6HS-90-05**
- 120° angle **KIT-6HS-120-05**
- **KIT-6HD-120-035** diamond
- **KIT-6HD-120-050** diamond

Portable marking device for very deep markings on hard metals

**Model:**

**X50**

electro-pneumatic

marking areas: 130x25 mm

**Controller:**



Remote 7" touch screen programming box

**Includes:**



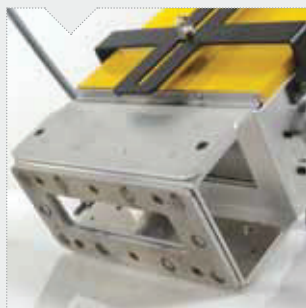
Stamper 2.0 PC software



Ethernet, USB, I/O port



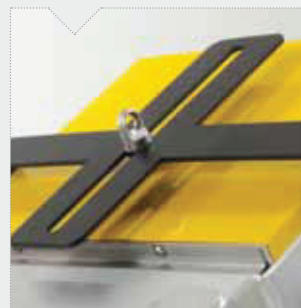
Robotic cable head-box, length 3 m



Height adjustable magnetic support base



Adapter for marking of cylindrical parts



Hook for weight balancer

**Options:**



BC-DLC bar-code reader for the acquisition of codes to be marked



2420-ASM extended robotic cable, lengths available: 5 m, 10 m, 20 m, 30 m