

Purchasing's Gateway to New Sources

The Gateway

Helping to Keep Purchasing Decision Makers Informed
25,000+ people read *The Gateway* in over 7500 companies.

SUBSCRIPTIONS: FREE JULY 2017 Issue No. 217

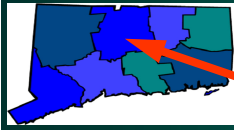


DAPRA MARKING SYSTEMS

Bloomfield, CT

ROUTING

Buyer _____
Mfg Engrg _____
Engrg Mgr _____
Mat Mgr _____
Production _____
Marketing _____
Other _____
Return to _____



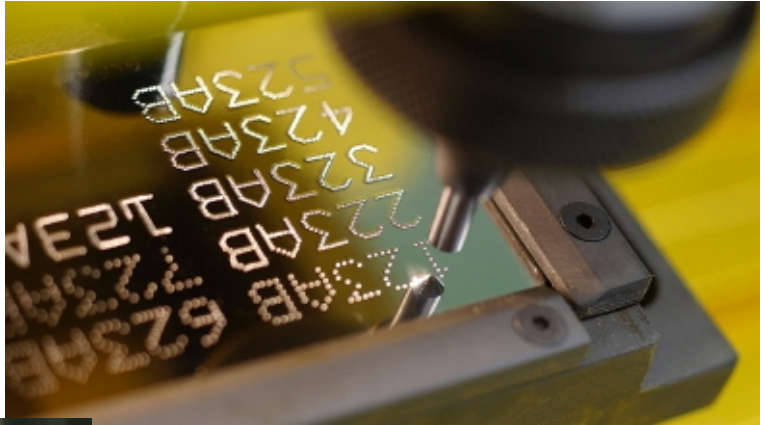
DAPRA MARKING SYSTEMS

BLOOMFIELD, CT

Making Direct Part Marking Easy

From contract marking services to standalone stations, CNC tools and fully integrated systems for production lines, Dapra Marking Systems will help you find the most efficient solution to your part marking requirements.

As more industries demand component tracking from “cradle to grave,” direct part marking and traceability have become more important than ever to manufacturers and suppliers of all sizes. With a wide variety of marking technologies and system configurations available, choosing the best solution



Dapra Marking Systems is one of the country’s leading sources of direct part marking systems and contract part marking services.



Much of Dapra Marking Systems’ contract marking work is performed on in-house dot peen marking machines.

to fit your specific needs can be a daunting task. Fortunately, one of the industry’s most trusted experts is based right here in New England.

Thirty-plus years of experience combined with the industry’s most well-rounded portfolio of marking technologies and configurations gives Dapra Marking Systems the unmatched ability to help businesses both large and small determine the most cost-effective, efficient solution for their unique part marking, verification and traceability needs. From text, logos, dates and serial numbers to Data Matrix codes and unique aerospace, automotive and company-specific standards, Dapra Marking will help you select a solution that is well-suited to your component material, size and shape – taking into consideration the quantity of parts to be marked and your existing production processes.

“Whether a customer is looking for contract marking services or their own marking system, our knowledge and experience in this field enables us to provide the highest-quality and most efficient solutions for their requirements,” says Richard Tatem, Dapra Marking’s Lead Senior Service Engineer.

Continued on page 7



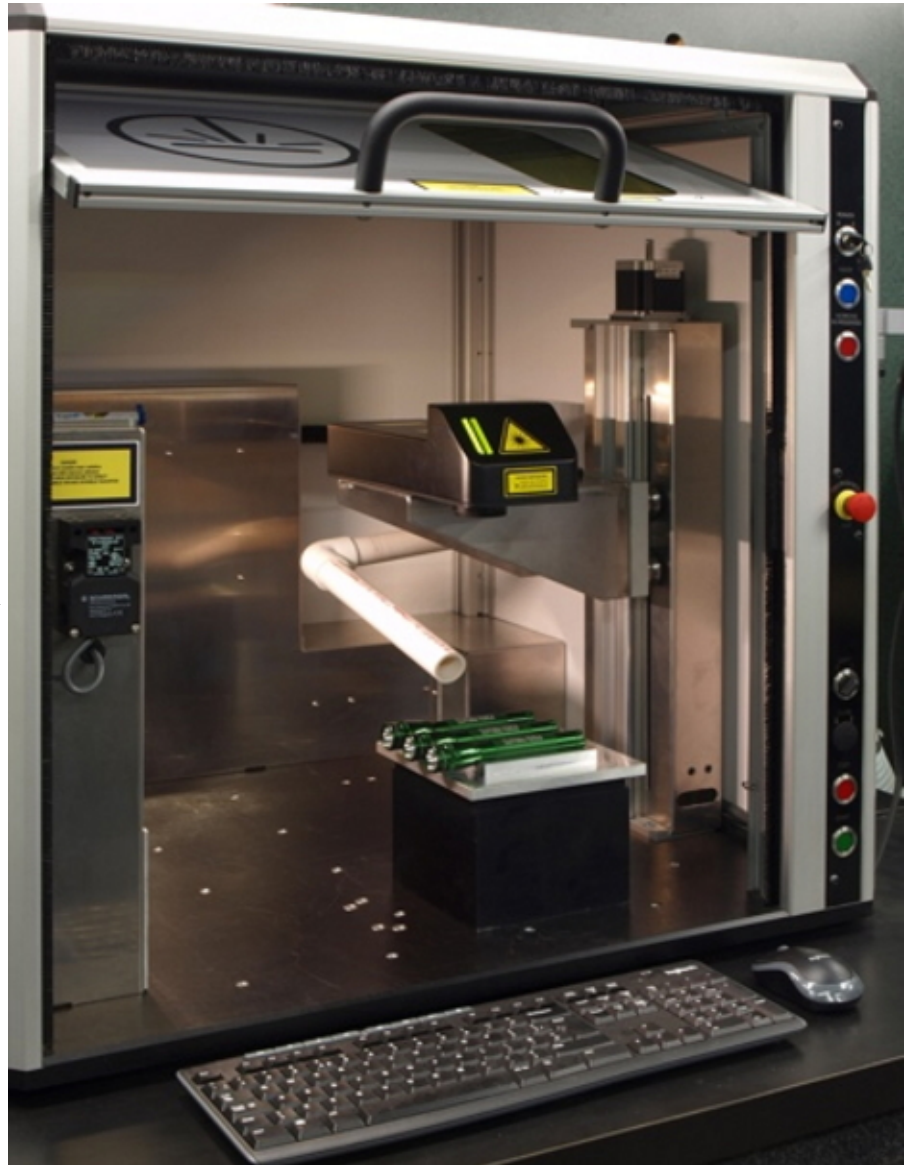
Affordable Contract Marking Services to Meet Demanding Specifications

Fully featured marking systems can cost from thousands to tens of thousands of dollars, but small shops and those with specific requirements for isolated jobs do have options for reliable marking without a large up-front investment. Dapra Marking offers contract marking services out of its Bloomfield, Connecticut headquarters, specializing in dot peen and laser marking and verification to DoD UID, aerospace and automotive specifications. Most contract jobs are in the 30- to 50-part range, but the company will take on much smaller batches and has done large runs of up to a couple thousand parts.

“We started offering contract marking services more than 25 years ago,” Tatem says, “Our sales team was working with potential customers that had an immediate need for part marking, but for the volume they required it just wasn’t worth it to purchase a machine for themselves. A contract service offering seemed like a great solution in many of those situations.

“Our experience with specifications and certain applications also comes into play. We have some customers who actually have the marking equipment they need in-house, but when certain demanding specs or part types are in play they know they can trust us to do the job right the first time.”

Dapra Marking has helped many companies by marking permanent serialization, date codes, lot codes, text, logos, graphics and Data Matrix codes to the strictest standards and specifications. Most contract marking customers are subcontractors to major aircraft engine builders or automotive manufacturers. Dapra has a wealth of experience marking to specifications for many industry-specific organizations and major manufacturers, including General Electric, Pratt &



Dapra Marking also offers laser marking workstations and laser contract marking services.

Whitney, SAE Aerospace, Rolls Royce and the U.S. Department of Defense.

When discussing a potential contract marking job, Dapra requests prints of the part identifying the mark location, as well as information about the part material, what spec it needs to be marked to, and the type of mark that is required. This helps them identify the type of marking process and equipment that is best suited to the project, determine if any custom fixturing is needed that might affect the cost of the job, and figure out if their in-house capabilities are a good fit for the customer’s needs.

Continued on page 9



Dot Peen? Laser? Choose the Ideal Technology for Your Application

If you are looking to purchase a system for in-house marking, there are many technologies available. Low-stress dot peen is the most popular marking method among Dapra Marking's customer base. This involves permanently indenting dots into a component with a stylus. These cost-effective systems provide clear, permanent marks (including Data Matrix codes) on most materials up to 65 HRC, and they are often an ideal solution for aerospace, oil and gas, and general manufacturing applications.

For higher-resolution and higher-contrast marks and faster cycle times, laser marking systems are also popular for marking plastics and metals. Dapra Marking offers both turnkey Class 1 workstations and Class 4 systems. Laser systems do not offer the mark depth of dot peen systems, and they are typically much costlier.

Dapra Marking also offers inexpensive electrochemical etch systems to create permanent, high-resolution marks on conductive metal surfaces. These systems are good for thin-walled parts that might be deformed by other processes, or parts that cannot have any raised surfaces. Scribe marking systems use a scratching/engraving process that creates a solid, continuous mark, typically on heat-treated components or in automotive production areas with noise restrictions. The company will be happy to help you choose the most appropriate technology for your unique application.

Configurations to Cater to Any Requirement

You do not need to be bound to a bench-top station for part marking. Fixed stations are ideal for marking small parts, and for marking small characters and 2D codes. If you need to mark large or heavy components that cannot be easily moved and/or positioned on a bench (think large pipes, tubes, castings, valve bodies, frames, etc.), Dapra Marking also offers a variety of portable hand-held dot peen marking "guns" that allow you to easily bring your marking system directly to the item to be marked. For maximum flexibility, combination bench-portable systems are also available, offering quick, no-tools changeover between configurations.



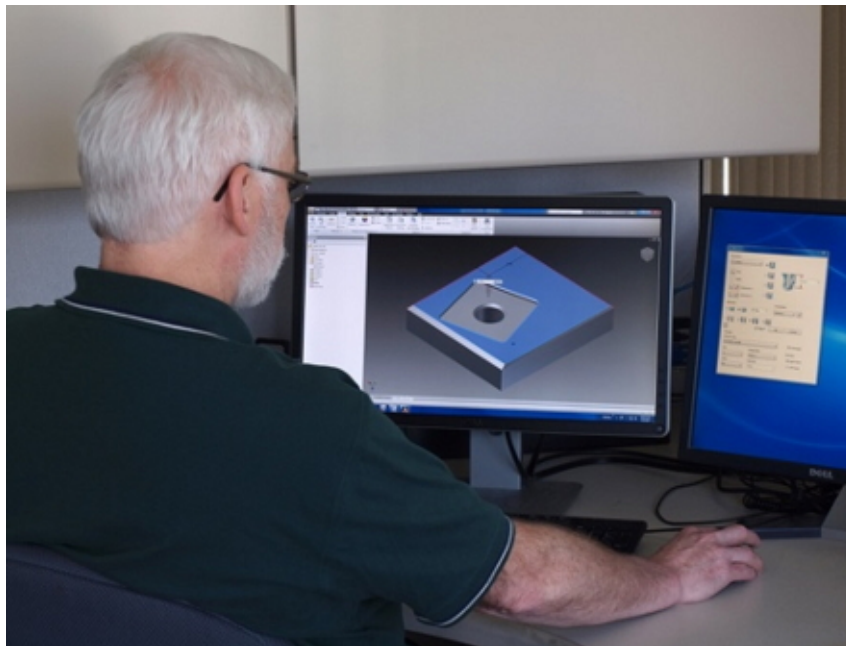
Dapra Marking Systems' service staff includes (L to R): Rich Tatem, Lead Sr. Service Engineer; Mike Livingstone, Service Technician; and Joe Cheney, Service Technician/Scheduler. Not pictured: Carl Williams, Marking Support Engineer.



Integrated /inline part marking systems are available for use in automatic or semi-automatic production lines and manufacturing processes. These are intended for use with unattended machining processes, robotic cells and fully automated production lines. Dapra Marking can also provide custom-engineered solutions, including fixtures and full marking systems, for especially unique needs.

Mark Directly within Your CNC Machine/Lathe

In some environments, marking directly within a CNC machine or lathe can be an affordable alternative to secondary marking with a dedicated system. Dapra Marking offers a wide range of CNC tools for easy, permanent part marking within your existing equipment, allowing you to streamline your production workflow and mark parts directly where they are being machined. Spindle, coolant and pneumatically actuated tools are available.



Dapra Marking can design and build custom fixtures to allow customers to efficiently mark unique parts.

Easy Solutions for Mark Verification and Component Traceability

Machine-readable identification – most notably in the form of 2D Data Matrix codes – is used by manufacturers to identify and track parts throughout their entire life cycle, from manufacturing to supply chain operations.

Dapra Marking is an expert in Direct Part Mark Identification (Auto-ID), having served on the committee that developed the Association for Automatic Identification and Mobility's Direct Part Marking specifications. From hand-held and fixed-mount code readers to marking systems with integrated cameras, Dapra Marking can equip you with the machine vision tools necessary to verify marks and ensure reliable component traceability.

DAPRA: A Legacy of Excellence in Metalworking Tools

Dapra Marking has been providing direct part marking solutions and services since the company was still known as Wetzel Tool Corporation in 1983. It is a division of Dapra Corporation, which has been supplying metalworking companies with superior quality cutting tools, workholding and rotary positioning products for more than 60 years. The Dapra division specializes in American-made, high-performance indexable carbide milling tools and inserts for a broad range of operations, including contouring, facing, slotting and ramping, offering maximum value in difficult metalworking applications. Dapra also imports workholding and positioning equipment from Europe.

info@dapra.com
6 Granby Street
Bloomfield, CT 06002
Toll-Free: 800-442-6275
Local Phone: 860-286-8728
Fax: 860-242-2017
sales@dapramarking.com
www.DapraMarking.com

