

The HandHeld Portadot is a fully programmable Dot Peen system for use in all environments where bringing the marking device to the part is required. It is the best solution for accurately marking text, symbols, and Data Matrix codes on large parts or components that cannot be easily marked at a fixed station.

A robust, lightweight design allows the HandHeld Portadot to be used by anyone in a manufacturing environment. It is an ideal replacement for hand stamping and reduces marking-related injuries.



The HandHeld Portadot incorporates the latest manufacturing technology and the most user-friendly software available.



Your portable solution for **direct part marking**.

STANDARD FEATURES:

- Self-contained system, *no PC required*
- Lightweight, mobile units can be used right out of the box
- Durable, high-quality components, ensuring low operating and maintenance costs
- Regrindable carbide stylus for permanent part marking (up to 65 Rc) on a wide range of materials
- Precise, electromechanical operation, *no air required*
- Linear, angular, and circular (arced) marking formats
- High-resolution LCD screen
- Dual RS-232 serial ports
- Digital I/O interface
- Automatic serialization and variable data insertion
- Time/date/shift codes
- Part counters
- Internal dot logo generator
- Ability to import and mark HPGL graphics
- Password protection
- Trial run function to check the fit of marking data before marking
- Layout preview of marking information on the LCD screen

OPTIONS: *(Available at additional cost)*

- Data Matrix encode software
- Win2068 NIMUE, Windows™-based marking software
- Custom locating fixtures and custom engineering
- Custom software
- Column, base, and adapter for using the HandHeld as a bench-mounted system
- Industrial cart designed for holding the HandHeld system and transporting to various locations
- Battery-powered operation



Available with column, base, and adapter for bench-mounted use.

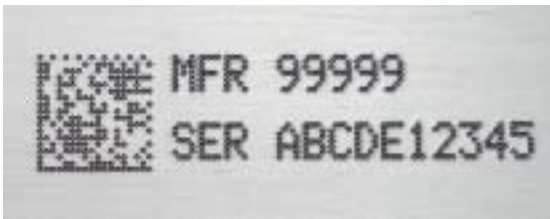


SPECIFICATIONS

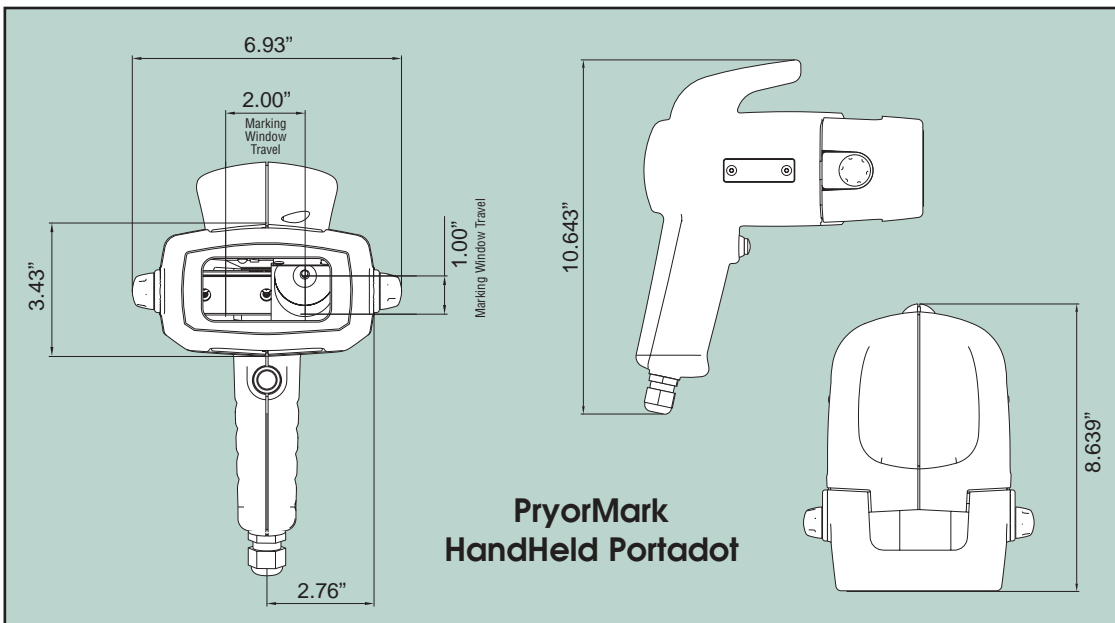
Complete system includes marking head with flat locating pad (as shown), controller with handle, marking head cable (9 ft.), keyboard (PS2 style), V-locating pad for round parts, and embedded operating system.

- Marking window: 2.00"W x 1.00"H
- Character size range: .040" to 1.00" (.008" increments)
- Fonts: 5x7 and 7x9 dot matrix, 5x9 SEMI OCR dot matrix and Varidot (variable dot spacing for continuous line characters)
- Memory: 1350 individual marking layouts, maximum
- Power input: 110 VAC, 60 Hz; 240 VAC, 50 Hz available on request. No air source is required.
- Stylus actuation: Electric solenoid
- Net Weight:

Marking head/cable	6 lbs.
Controller	22 lbs.



Flat locating pad (above) allows for accurate marking on a wide range of materials. V-plate adapter (left) provides for easy marking on round parts.



DAPRA[®]
MARKING SYSTEMS

It is the better way to mark.

66 Granby Street, Bloomfield, CT 06002 Tel. 800-442-6275 Fax. 860-726-9555 www.dapramarking.com