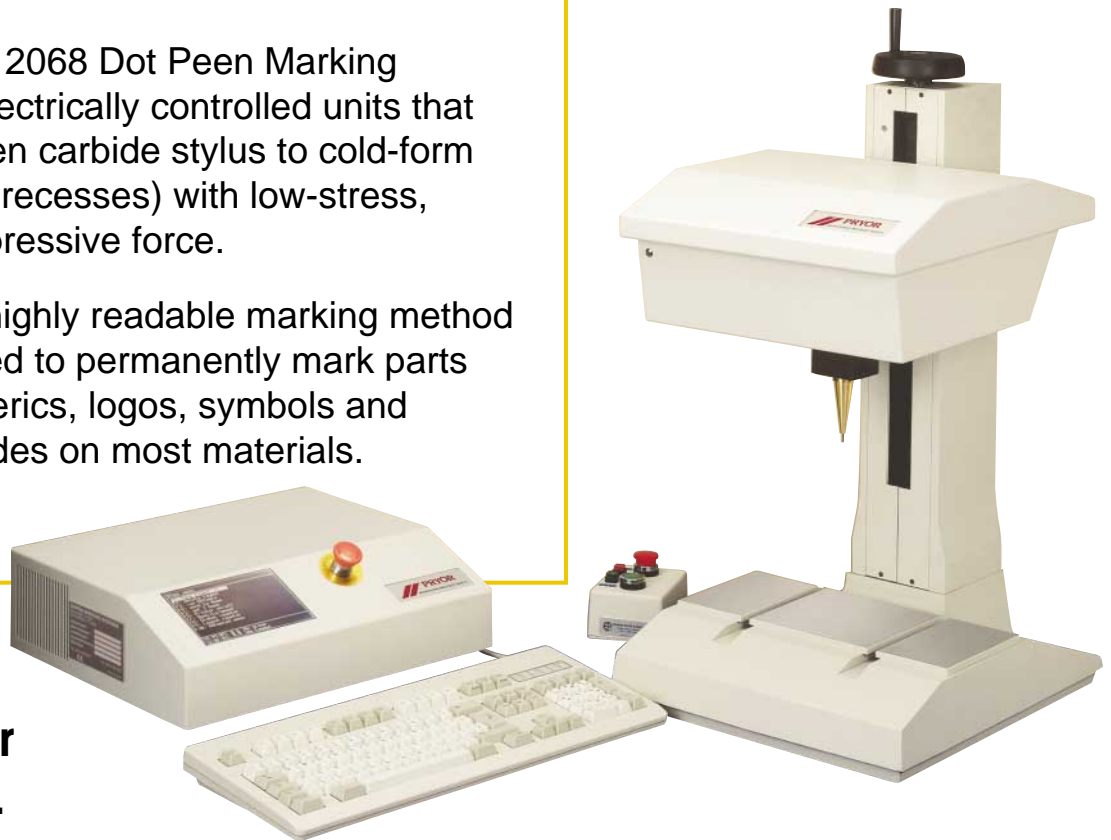


PryorMark 2068 Series II

HAPRA™
MARKING SYSTEMS

The PryorMark 2068 Dot Peen Marking Systems are electrically controlled units that utilize a tungsten carbide stylus to cold-form dots (spherical recesses) with low-stress, accurate, compressive force.

Dot Peen is a highly readable marking method that can be used to permanently mark parts with alphanumerics, logos, symbols and Data Matrix codes on most materials.



It is the better way to mark.

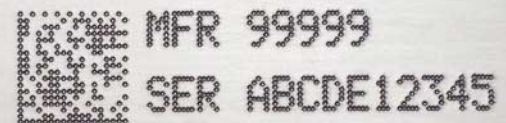
STANDARD FEATURES:

- Powerful, self-contained system that does not require a dedicated PC and is well-suited for industrial environments
- Operates using 115VAC, 60 Hz, NO AIR REQUIRED
- Straight, angular, circular, and radial marking capability to accommodate a variety of part shapes and sizes with quick changeover
- Highly readable LCD screen (4.75" x 3.50" viewing area)
- RS-232 ports for backup, barcode input and external communications
- Heavy-duty construction for maximum rigidity
- Regrindable carbide stylus with low-stress geometries
- Jog function in multiple increments to facilitate setup
- Layout preview
- Internal logo generator to create logos and symbols
- Import HPGL files (.plt)
- Automatic serialization
- Trial run function to scan marking areas for correct location, without marking
- Can mark material up to 65 Rc

Custom-engineered marking systems are also available.



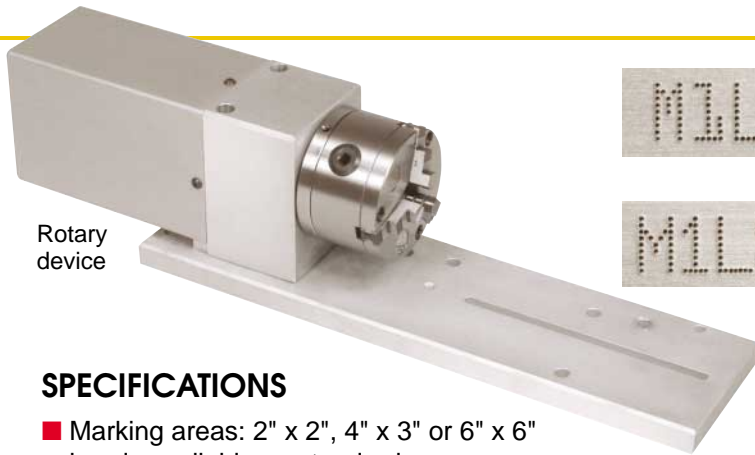
Radial marking



Data Matrix codes



5x7 dot matrix font



Rotary device



SEMI-OCR font



7x9 dot matrix font



Foil marking



Diamond drag

SPECIFICATIONS

- Marking areas: 2" x 2", 4" x 3" or 6" x 6" heads available as standard
- Character sizes: .006" to 3.0" in .006" increments
- X/Y-axis resolution: .001"
- Character fonts: 5x7 and 7x9 dot matrix, 5x9 SEMI-OCR and Varidot (continuous line)
- Internal layout storage: 150 individual layouts, maximum
- Power: 115VAC, 60 Hz
- Languages: multiple
- Meets ED Directive 98/37/EC
- Meets EMC Directive 89/336/EEC
- Meets Low Voltage Directive 72/23/EEC

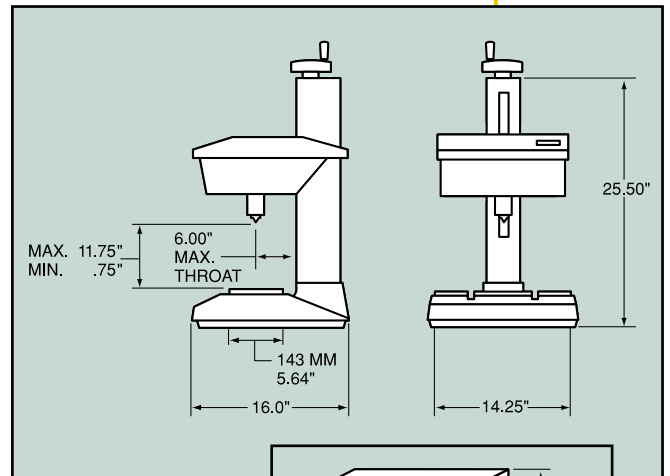
Net Weight: Marking head, column and base 104 lbs.
Controller 22 lbs.

OPTIONAL SOFTWARE FEATURES

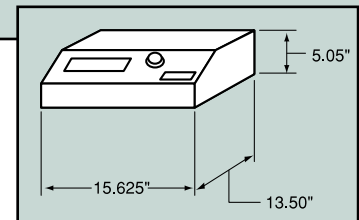
- Data Matrix Codes (ECC 200)
- WIN2068 Windows™-based marking
- Automatic time/date/shift coding
- Automatic part counter
- Multi-level password protection
- Character aspect ratio adjustment
- Digital I/O for setting inputs and outputs to external equipment
- Maximum internal layout storage: 1350 layouts
- Multiple marking speeds

OPTIONAL HARDWARE AND ACCESSORIES

- Greater marking areas
- Programmable Z-axis
- Autosense (automatic part sensing)
- Rotary device
- Dual solenoids
- Bar code readers
- Foil feed attachment (color on plastics)
- Heavy-duty deep marking
- Manual and automatic tag fixtures and feeding systems
- Reading and verification systems for Data Matrix codes



Head dimensions shown are for 4" x 3" window.



DAPRA[™]
MARKING SYSTEMS

www.dapramarking.com

Email: sales@dapramarking.com

66 Granby Street, Bloomfield, CT 06002

Tel: 800-442-6275

In CT: 860-286-8728

Fax: 860-726-9555